

86-Type Smart Switch / Scene Control Panel Pairing Quick Guide



1

86-Type Smart Switch Specifications

| Specifications \ Model | Touch:SH-86-1B,SH-86-2B,SH-86-3B Push :SH-P86-1,SH-P86-2,SH-P86-3 |
|---------------------------|--|
| Appearance Material | Tempered glass /Plastic |
| Button Type | Touch / Push |
| Installation | Flush / Surface |
| Consumption | Single 10W - 500W |
| Standby Power Consumption | ≤ 0.5W |
| Operating Temperature | -20 °C ~ 60 °C |
| Relative Humidity | 10% ~ 93% (Non-condensing) |
| Dimension | 86*86*22 (mm) |

2

Scene Control Panel Specifications:

| | | | |
|--------------------|----------------------|-----------------------|------------------------------------|
| Model | SH-S3F86 | Switch Type | Push-type |
| Number Of Button | 2/3 | Power | DC 3V (CR 2032 Lithium Battery) |
| Working Frequency | 433MHz | Operating Temperature | -20 °C ~ +55 °C |
| Protection Level | IP67 | Control Distance | Barrier-free Distance <100M |
| Executive Standard | GB/T16915.1 -2014 | Transmit Power | 5dB |

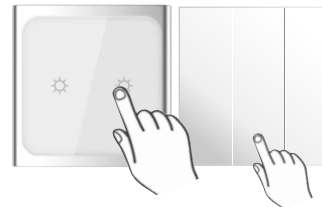
3

Pair With Scene Control Panel

Press and hold the switch button for 3 seconds (Hear the buzzer "beep", which indicates it is in the pairing mode) (Picture 1).

Press the corresponding scene button (Picture 2). Hear the buzzer "beep beep". The indicator light stop flashing, which indicates the pairing is successful.

Picture 1



Picture 2



Clear The Pairing

Press and hold the button for 3 seconds to enter to the pairing mode. Then press and hold the button for 9 seconds. Hear the buzzer "beep beep beep", which indicates the clearing is successful.

4